



Schott
N.Y.C.

AUTOMNE HIVER 2018-2019
2018-2019 FALL WINTER



PHOTOS : SHOOT, PRODUCED, STYLED AND DIRECTED BY RICH LONDON PR



MEN	4	HOMME	
JACKETS	4	BLOUSONS	
LEATHERS	28	CUIRS	
SWEATERS	44	PULLS	
SWEATSHIRTS	54	SWEATSHIRTS	
T-SHIRTS	58	T-SHIRTS	
PANTS	62	PANTALONS	
LADIES	64	FEMME	
JACKETS	64	BLOUSONS	
LEATHERS	76	CUIRS	
SWEATSHIRTS	84	SWEATSHIRTS	
T-SHIRTS	86	T-SHIRTS	
PANTS	87	PANTALONS	
ACCESSORIES	88	ACCESSOIRES	
BAGS	96	SACS	



SMITH 18 NAVY – P:11

Duck feathers

OTTAWA

PARKA DOUDOUNE À CAPUCHE AMOVIBLE, FAUSSE FOURRURE AMOVIBLE, GARNIE 60% DUVET DE CANARD, 40% PLUMES DE CANARD, 100% NYLON
BLIZZARD DOWN PARKA WITH REMOVABLE HOOD, REMOVABLE FAUX FUR, FILLED WITH 60% DUCK DOWN, 40% DUCK FEATHERS, 100% NYLON
BLACK, KHAKI + BLACK, NAVY



new color
KHAKI + BLACK
+ WITHOUT FUR

BLACK

Duck feathers

OTTAWA 2

PARKA DOUDOUNE À CAPUCHE FIXE, FOURRURE TANUKI AMOVIBLE, EMPIÈCEMENTS ÉPAULES ET COUDES, GARNIE 60% DUVET DE CANARD, 40% PLUMES DE CANARD, 100% NYLON
BLIZZARD DOWN PARKA WITH FIXED HOOD, REMOVABLE TANUKI FUR, SHOULDER AND ELBOW YOKES, FILLED WITH 60% DUCK DOWN, 40% DUCK FEATHERS, 100% NYLON
BLACK, KHAKI + BLACK



WITHOUT FUR



WITHOUT HOOD

KHAKI + BLACK

Duck feathers

WOLF 18

PARKA CITY, ZIPPÉE ET BOUTONNÉE, CAPUCHE FIXE, FOURRURE TANUKI AMOVIBLE, GARNIE 80% PLUMES DE CANARD, 20% DUVET DE CANARD, 65% COTON, 35% POLYESTER
CITY PARKA, ZIPPERED AND BUTONNED, FIXED HOOD, REMOVABLE TANUKI FUR, FILLED WITH 80% DUCK FEATHERS, 20% DUCK DOWN, 65% COTTON, 35% POLYESTER
BLACK, NAVY

existe avec fausse fourrure / available with faux fur : **WOLF 18 X**



WITHOUT FUR

TANUKI FUR
or
FAUX FUR

BLACK

Duck feathers

TORONTO

BLOUSON SNORKEL COURT, CAPUCHE ET FAUSSE FOURRURE AMOVIBLES, EMPIÈCEMENTS ÉPAULES ET COUDES, GARNIE 60% DUVET DE CANARD, 40% PLUMES DE CANARD, 100% NYLON
SNORKEL SHORT JACKET, REMOVABLE HOOD AND FAUX FUR, SHOULDER AND ELBOW YOKES, FILLED WITH 60% DUCK DOWN, 40% DUCK FEATHER, 100% NYLON
BLACK

existe avec fourrure tanuki / available with tanuki fur : **TORONTO 2**



TANUKI FUR
or
FAUX FUR

BLACK

6 BLOUSONS / JACKETS

TUCKER

PARKA WORKER, CAPUCHE FIXE, FAUSSE FOURRURE AMOVIBLE, 100% COTON
WORKER PARKA, FIXED HOOD REMOVABLE FAUX FUR, 100% COTTON
ARMY BEIGE + BEIGE FUR



WITHOUT FUR



ARMY BEIGE + BEIGE FUR

M53 X

PARKA ARMY À CAPUCHE FIXE, FAUSSE FOURRURE AMOVIBLE, 100% NYLON
HOODED ARMY PARKA WITH DETACHABLE FAUX FUR, 100% NYLON
BLACK, DARK RED, KHAKI, NAVY



NAVY

M53

PARKA ARMY À CAPUCHE FIXE, FAUSSE FOURRURE AMOVIBLE ET DOUBLURE IMPRIMÉE NEW YORK, 100% NYLON
HOODED ARMY PARKA WITH DETACHABLE FAUX FUR AND FULL NEW YORK PRINTED LINING, 100% NYLON
BLACK, DARK RED, KHAKI, NAVY



LINING

BLACK

DARK RED

KHAKI

NAVY

ARTICA X

PARKA À CAPUCHE FIXE, FAUSSE FOURRURE AMOVIBLE, 100% NYLON
 FIXED HOODED PARKA, REMOVABLE FAUX FUR, 100% NYLON
 BLACK, KHAKI, NAVY



WITHOUT FUR

BLACK

ARTICA

PARKA À CAPUCHE FIXE, FOURRURE TANUKI AMOVIBLE, 100% NYLON
 FIXED HOODED PARKA, REMOVABLE TANUKI FUR, 100% NYLON
 BLACK, KHAKI, NAVY



WITHOUT FUR

KHAKI

LINCOLN 18 X

PARKA SNORKEL "FISHTAIL" À CAPUCHE FIXE, FAUSSE FOURRURE AMOVIBLE,
 REMBOURRAGE POLYESTER, 65% POLYESTER, 35% COTON
 "FISHTAIL" SNORKEL PARKA, FIXED HOOD, REMOVABLE FAUX FUR,
 POLYESTER PADDING, 65% POLYESTER, 35% COTTON
 BLACK, DARK KHAKI, NAVY
 existe avec fourrure tanuki / available with tanuki fur: LINCOLN 18



M53 NAVY – P.6



NAVY



ARTICA KHAKI – P7

N3 VINT

PARKA SNORKEL, TYPE N3-B, CAPUCHE FIXE, FOURRURE DÉTACHABLE, BANDES RÉFLÉCHISSANTES, MARQUAGES US AIR FORCE, 100% NYLON
 SNORKEL PARKA, TYPE N3-B, FIXED HOOD, DETACHABLE FUR, REFLECTIVE TAPES, STENCILED US AIR FORCE SPECS, 100% NYLON

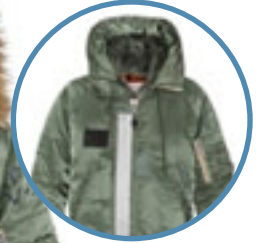
SAGE

existe avec fausse fourrure / available with faux fur : N3 VINT X

TANUKI FUR
 or
 FAUX FUR



SAGE



WITHOUT FUR



BACK

N3 B JET

PARKA SNORKEL, TYPE N3-B, CAPUCHE FIXE, FOURRURE TANUKI DÉTACHABLE, PLASTRON À CAPUCHE AMOVIBLE, 100% NYLON
 SNORKEL PARKA, TYPE N3-B, FIXED HOOD, DETACHABLE TANUKI FUR, REMOVABLE HOODED CENTER FRONT PLACKET, 100% NYLON

DARK NAVY, SAGE

existe avec fausse fourrure / available with faux fur : N3 B JET X

TANUKI FUR
 or
 FAUX FUR



DARK NAVY



WITHOUT FUR



WITHOUT CENTER FRONT PLACKET

2290 J

DOUDOUNE À CAPUCHE ET FOURRURE TANUKI AMOVIBLES, REMBOURRAGE POLYESTER, 60% COTON, 40% NYLON
 PUFFER JACKET WITH REMOVABLE HOOD AND DETACHABLE TANUKI FUR, POLYESTER PADDING, 60% COTTON, 40% NYLON
 BLACK, NAVY, OCHRE



2290 JX

DOUDOUNE À CAPUCHE ET FAUSSE FOURRURE AMOVIBLES, REMBOURRAGE POLYESTER, 60% COTON, 40% NYLON
 PUFFER JACKET WITH REMOVABLE HOOD AND DETACHABLE FAUX FUR, POLYESTER PADDING, 60% COTTON, 40% NYLON
 BLACK, NAVY, OCHRE



NAVY

10 BLOUSONS / JACKETS

MASON 18

BLOUSON NAVAL TYPE N-1, COL FAUSSE FOURRURE AMOVIBLE, 100% COTON
DECK JACKET, TYPE N-1, REMOVABLE FAUX FUR COLLAR, 100% COTTON
ARMY BEIGE, DARK NAVY, KHAKI



WITHOUT
COLLAR



KHAKI

DUBON

PARKA ARMY À CAPUCHE FIXE, 65% POLYESTER, 35% COTON
HOODED ARMY PARKA, 65% POLYESTER, 35% COTTON
BLACK, CHARCOAL, DARK KHAKI, NAVY



NAVY

CONDOR

VESTE DE COMBAT AVEC BADGE DRAPEAU US, 65% POLYESTER, 35% COTON
FIELD JACKET WITH US FLAG PATCH, 65% POLYESTER, 35% COTTON
BLACK, DARK KHAKI, NAVY



DARK KHAKI

CONDOR X

VESTE DE COMBAT, 65% POLYESTER, 35% COTON
FIELD JACKET, 65% POLYESTER, 35% COTTON
BLACK, DARK KHAKI, NAVY



NAVY

FIELD

VESTE DE COMBAT AVEC PLASTRON AMOVIBLE, 100% NYLON
 FIELD JACKET WITH REMOVABLE FRONT PLACKET, 100% NYLON
 BLACK, KHAKI, NAVY



BLACK

KHAKI

NAVY

SMITH 18

VESTE DE COMBAT, CAPUCHE FIXE, PLASTRON AMOVIBLE À CAPUCHE, 67% COTON, 33% NYLON
 FIXED HOODED FIELD JACKET WITH REMOVABLE HOODED CENTER FRONT PLACKET, 67% COTON, 33% NYLON
 BLACK + BLACK, KHAKI + BLACK, NAVY + BLACK



BLACK + BLACK

KHAKI + BLACK

NAVY + BLACK

CENTER FRONT
PLACKET

WITHOUT
LINING

12 BLOUSONS / JACKETS

AIRFORCE 1

BOMBER MA-1, 100% NYLON
MA-1 BOMBER JACKET, 100% NYLON
ARMY KHAKI, BLACK, NAVY



NAVY

AIRFORCE 2

BOMBER MA-1 AVEC BADGES MILITAIRES, 100% NYLON
MA-1 BOMBER JACKET WITH MILITARY PATCHES, 100% NYLON
ARMY KHAKI, BLACK, NAVY



ARMY KHAKI

JKT AC

CO-BRANDING SCHOTT X AMERICAN COLLEGE
BOMBER MA-1 FITTÉ, 100% NYLON
FITTED MA-1 BOMBER JACKET, 100% NYLON
ARMY KHAKI, BLACK, BORDEAUX, DARK BURGUNDY, KHAKI, MIDNIGHT, NAVY, SMOKE



DARK BURGUNDY

JKT AC BADGES

CO-BRANDING SCHOTT X AMERICAN COLLEGE
BOMBER MA-1 FITTÉ AVEC BADGES, 100% NYLON
FITTED MA-1 BOMBER JACKET WITH PATCHES, 100% NYLON
ARMY KHAKI, NAVY



ARMY KHAKI

210 100

UNISEX

BLOUSON PILOTE CWU DOUBLURE ORANGE, 100% NYLON
 CWU PILOT JACKET, ORANGE LINING, 100% NYLON
 BLACK, NAVY, ARMY KHAKI



NAVY

JETHAWK

BLOUSON PILOTE CWU À CAPUCHE FIXE, PLASTRON MOLTONNÉ À CAPUCHE AMOVIBLE,
 FOURRURE TANUKI DÉTACHABLE, 100% NYLON LAVÉ
 HOODED CWU FLIGHT JACKET, REMOVABLE HOODED CENTER FRONT FLEECE PLACKET,
 DETACHABLE TANUKI FUR, 100% WASHED NYLON
 DARK NAVY, SAGE

existe avec fausse fourrure / available with faux fur : JETHAWK X



SAGE

TEMPEST 17

BLOUSON N2-B À CAPUCHE FIXE ET FAUSSE FOURRURE AMOVIBLE, 100% NYLON
 N2-B JACKET WITH FIXED HOOD AND REMOVABLE FAUX FUR, 100% NYLON
 ARMY KHAKI, BLACK



WITHOUT FUR



BLACK

TORNADO

BLOUSON SNORKEL COURT À CAPUCHE FIXE, FAUSSE FOURRURE AMOVIBLE, 100% NYLON
 SNORKEL SHORT JACKET WITH FIXED HOOD, REMOVABLE FAUX FUR, 100% NYLON
 BLACK, KHAKI, NAVY



NAVY

14 BLOUSONS / JACKETS

211 VINT

BLOUSON PILOTE TYPE B-15,
COL FAUSSE FOURRURE ET PLASTRON AMOVIBLES, 100% NYLON
FLIGHT JACKET TYPE B-15, REMOVABLE CENTER FRONT PLACKET,
DETACHABLE FAUX FUR COLLAR, 100% NYLON
BLACK, DARK NAVY, SAGE



WITHOUT FUR



WITHOUT
PLACKET



BLACK



PILOT-1

BLOUSON PILOTE AVEC BADGES, COL FAUSSE FOURRURE AMOVIBLE, 100% NYLON
PILOT JACKET WITH PATCHES, REMOVABLE FAUX FUR COLLAR, 100% NYLON
BLACK, NAVY



WITHOUT FUR



NAVY



O'HARA

BLOUSON PILOTE, COL FAUSSE FOURRURE AMOVIBLE, 100% NYLON
PILOT JACKET WITH REMOVABLE FAUX FUR COLLAR, 100% NYLON
ARMY KHAKI, BLACK, NAVY



WITHOUT FUR



ARMY KHAKI

PILOTE

BLOUSON PILOTE, COL FAUSSE FOURRURE AMOVIBLE, 100% NYLON
PILOT JACKET, REMOVABLE FAUX FUR COLLAR, 100% NYLON
BLACK, DARK BURGUNDY, KHAKI, NAVY



WITHOUT FUR



DARK BURGUNDY

AIR

BLOUSON PILOTE, COL FAUSSE FOURRURE AMOVIBLE, 65% POLYESTER, 35% COTON
 PILOT JACKET WITH REMOVABLE FAUX FUR COLLAR, 65% POLYESTER, 35% COTTON
 BLACK + BEIGE, BLACK, DARK KHAKI, KHAKI + BEIGE, NAVY + BEIGE, NAVY



NAVY

NAVY + BEIGE

BLACK

BLACK + BEIGE

DARK KHAKI

KHAKI + BEIGE

WITHOUT COLLAR

AIRMAN

BLOUSON DOUDOUNE, COL FAUSSE FOURRURE AMOVIBLE, 60% COTON, 40% NYLON
 PADDED JACKET, REMOVABLE FAUX FUR COLLAR, 60% COTON, 40% NYLON
 BLACK



WITHOUT COLLAR

BLACK

AIRCREW

BLOUSON PILOTE, COL FAUSSE FOURRURE AMOVIBLE, 80% LAINE, 20% NYLON
 PILOT JACKET, REMOVABLE FAUX FUR COLLAR, 80% WOOL, 20% NYLON
 DARK NAVY, DARK NAVY + OFF WHITE



WITHOUT COLLAR

DARK NAVY

DARK NAVY + OFF WHITE

16 BLOUSONS / JACKETS

NORTH 17

Duck feathers

DOUDOUNE POIDS PLUME, GARNIE 90% DUVET DE CANARD, 10% PLUMES DE CANARD, CAPUCHE FIXE, FAUSSE FOURRURE AMOVIBLE, 100% NYLON
LIGHTWEIGHT DOWN JACKET, FILLED WITH 90% DUCK DOWN, 10% DUCK FEATHERS, FIXED HOOD, REMOVABLE FAUX FUR, 100% NYLON

BLACK



WITHOUT FUR



BLACK

ROBY 2

BLOUSON URBAN BI-MATIÈRE À CAPUCHE FIXE, CORPS : 85% ACRYLIQUE, 15% LAINE, MANCHES : 100% NYLON
URBAN JACKET, FIXED HOOD, DUAL FABRIC, BODY : 85% ACRYLIQUE, 15% WOOL, SLEEVES : 100% NYLON

BLACK, NAVY



NAVY

ROBSON 1

BLOUSON URBAN BI-MATIÈRE, CORPS : 100% NYLON, MANCHES : 85% ACRYLIQUE, 15% LAINE
URBAN JACKET, DUAL FABRIC, BODY : 100% NYLON, SLEEVES : 85% ACRYLIC, 15% WOOL

ANTHRACITE, BLACK, DARK FOREST, NAVY



ANTHRACITE

BLACK

DARK FOREST

NAVY

new color

new color

Duck feathers

OAKLAND

DOUDOUNE POIDS PLUME, GARNIE 90% DUVET DE CANARD, 10% PLUMES DE CANARD, 100% NYLON
 LIGHT WEIGHT DOWN JACKET, FILLED WITH 90% DUCK DOWN, 10% DUCK FEATHERS, 100% NYLON
 ANTHRACITE, BLACK, BORDEAUX, NAVY



ANTHRACITE

BLACK

BORDEAUX

NAVY

Duck feathers

SILVERADO

DOUDOUNE POIDS PLUME,
 GARNIE 90% DUVET DE CANARD, 10% PLUMES DE CANARD, 100% NYLON
 LIGHT WEIGHT DOWN JACKET,
 FILLED WITH 90% DUCK DOWN, 10% DUCK FEATHERS, 100% NYLON
 ANTHRACITE, BLACK, CAMO DARK KHAKI, DARK FOREST, NAVY

Duck feathers

OAKLAND V

GILET DOUDOUNE POIDS PLUME,
 GARNI 90% DUVET DE CANARD, 10% PLUMES DE CANARD, 100% POLYESTER
 DUCK DOWN VEST, LIGHT WEIGHT,
 FILLED WITH 90% DUCK DOWN, 10% DUCK FEATHERS, 100% POLYESTER
 BLACK, NAVY



new color

CAMO DARK KHAKI



NAVY



BLACK

18 BLOUSONS / JACKETS

2190 MAX

DOUDOUNE EXTRA LONGUE À CAPUCHE FIXE, EMPIÈCEMENTS ÉPAULE, REMBOURRAGE POLYESTER, 100% NYLON
 EXTRA LONG FIXED HOODED PUFFER COAT, SHOULDER YOKES, POLYESTER PADDING, 100% NYLON
 BLACK + BLACK



BLACK + BLACK

2190 J

DOUDOUNE, EMPIÈCEMENTS ÉPAULE, CAPUCHE ET FAUSSE FOURRURE AMOVIBLES, REMBOURRAGE POLYESTER, CORPS : 100% NYLON, EMPIÈCEMENTS : 60% COTTON, 40% NYLON
 PUFFER JACKET, SHOULDER YOKES WITH DETACHABLE HOOD AND FAUX FUR, POLYESTER PADDING, BODY : 100% NYLON, YOKES : 60% COTTON, 40% NYLON
 ANTHRACITE + BLACK, BLACK + BLACK FUR, BLACK + BLACK, CAMO + BLACK, NAVY + BLACK, WHITE + BLACK FUR



WHITE + BLACK FUR



WITHOUT FUR



WITHOUT HOOD

2190 V

GILET MATELASSÉ FITTÉ, AVEC EMPIÈCEMENTS ÉPAULE, REMBOURRAGE POLYESTER, CORPS : 100% NYLON, EMPIÈCEMENTS : 60% COTON, 40% NYLON
 PADDED VEST, SLIM FIT, WITH SHOULDER YOKES, POLYESTER PADDING, BODY : 100% NYLON, YOKES : 60% COTTON, 40% NYLON
 ANTHRACITE + BLACK, BLACK + BLACK, CAMO + BLACK, DARK KHAKI + BLACK, NAVY + BLACK



CAMO + BLACK



NAVY + BLACK

2108 J

DOUDOUNE MATELASSÉE UNIE, CAPUCHE ET FAUSSE FOURRURE AMOVIBLES, REMBOURRAGE POLYESTER, 100% NYLON
 SOLID PUFFER JACKET, REMOVABLE HOOD AND FAUX FUR, POLYESTER PADDING, 100% NYLON
 BLACK, NAVY, ANTHRACITE, WHITE



ANTHRACITE



BLACK + WITHOUT HOOD

Duck feathers
RITCH

DOUDOUNE OVERSIZE, CAPUCHE FIXE, GARNIE 50% POLYESTER, 45% DUVET DE CANARD, 5% PLUMES DE CANARD, 100% NYLON
OVERSIZE DOWN JACKET, FIXED HOOD, FILLED WITH 50% POLYESTER, 45% DUCK DOWN, 5% DUCK FEATHER, 100% NYLON
BLACK, DARK FOREST, NAVY, OFF WHITE



DARK FOREST

ROCKY 2

DOUDOUNE AVEC CAPUCHE FIXE DOUBLÉE SHERPA ET FAUSSE FOURRURE AMOVIBLE, REMBOURRAGE POLYESTER, 100% NYLON
PUFFER JACKET WITH FIXED SHERPA HOOD AND DETACHABLE FAUX FUR, POLYESTER PADDING, 100% NYLON
BLACK, KHAKI, NAVY, WHITE



BLACK

ALAMO

BLOUSON TRUCKER QUILTÉ, COL FAUSSE FOURRURE AMOVIBLE, 100% NYLON
QUILTED TRUCKER JACKET, REMOVABLE FAUX FUR COLLAR, 100% NYLON
BLACK, NAVY



WITHOUT FUR

BLACK

DAYTONA 18

BLOUSON MOTARD, 100% POLYESTER
BIKER JACKET, 100% POLYESTER
BLACK, NAVY



NAVY

UNISEX

JKT ALASKA

DOUDOUNE UNISEXE, OVERSIZE, CAPUCHE FIXE, REMBOURRAGE POLYESTER, 65% COTON, 35% NYLON

UNISEX POLY FILL JACKET, OVERSIZE, FIXED HOOD, POLYESTER PADDING, 65% COTON, 35% NYLON

BLACK, BLUSH, MILITARY GREEN + BLUSH, MILITARY GREEN, NAVY, ORANGE, PALE BLUE, ROYAL BLUE, RED, RED + PALE BLUE, WHITE, YELLOW, YELLOW + ROYAL BLUE



NEBRASKA **UNISEX**

DOUDOUNE UNISEXE, OVERSIZE, CAPUCHE SOUS COL, REMBOURRAGE POLYESTER, 65% COTON, 35% NYLON
 UNISEX POLY FILL JACKET, OVERSIZE, HIDDEN HOOD UNDER COLLAR, POLYESTER PADDING 65% COTTON, 35% NYLON
 BLACK, BLUSH, BLACK + WHITE + RED, MILITARY GREEN, NAVY, ORANGE, PALE BLUE, ROYAL BLUE + WHITE + YELLOW, RED, ROYAL BLUE, WHITE, YELLOW



WHITE

ORANGE

MILITARY GREEN

BLACK

ROYAL BLUE

BLUSH

RED

YELLOW

NAVY

BLACK + WHITE + RED

ROYAL BLUE + WHITE + YELLOW

PALE BLUE

new color

new color

22 BLOUSONS / JACKETS

TRAILER

BLOUSON RANCHER, ZIPPÉ ET BOUTONNÉ,
EMPIÈCEMENTS VELOURS COUDES ET SOUS COL, 50% LAINE, 50% POLYESTER
RANCHER JACKET, ZIPPERED AND BUTONNED,
CORDUROY ELBOWS AND UNDER COLLAR, 50% WOOL, 50% POLYESTER
RED + BLACK CHECKS



BACK



RED + BLACK CHECKS

MADISON DNM

BLOUSON WORK PRESSIONNÉ AVEC PLASTRON À CAPUCHE ROUGE ZIPPÉ AMOVIBLE,
DOUBLURE MATELASSÉE, DENIM BRUT, 100% COTON
SNAPPED WORK JACKET WITH HOODED RED REMOVABLE ZIPPERED CENTER FRONT
PLACKET, QUILTED LINING, RAW DENIM, 100% COTTON
RAW



WITHOUT
COLLAR



WITHOUT
HOODED
CENTER FRONT
PLACKET

CABLER

BLOUSON STARDUST, 67% COTON, 33% NYLON
STARDUST JACKET, 67% COTTON, 33% NYLON
NAVY



NAVY

BENSON 18

BLOUSON URBAN, CAPUCHE FIXE DOUBLÉE SHERPA, 65% POLYESTER, 35% COTON
URBAN JACKET, FIXED HOOD WITH SHERPA LINING, 65% POLYESTER, 35% COTTON
BLACK



BLACK

HUSKY 18

ANORAK ENFILABLE À CAPUCHE FIXE, 100% NYLON
SMOCK JACKET WITH FIXED HOOD, 100% NYLON
BLACK + BLACK, CAMO + BLACK, KHAKI + KHAKI, RED + CAMO



BLACK + BLACK

CAMO + BLACK

RED + CAMO



HUSKY 18 BLACK + BLACK – P.23

CYCLONE 2

CABAN, AVEC PLASTRON DÉTACHABLE, DOUBLURE MATELASSÉE, 80% LAINE, 20% NYLON
WOOL PEACOCK, DETACHABLE CENTER FRONT PLACKET, QUILTED LINING, 80% WOOL, 20% NYLON
BLACK, DARK NAVY, HEATHER ANTHRACITE



BLACK

DARK NAVY

HEATHER ANTHRACITE

CYCLONE 4

CABAN COL SHERPA AMOVIBLE, 80% LAINE, 20% NYLON
WOOL PEACOCK, REMOVABLE SHERPA COLLAR, 80% WOOL, 20% NYLON
BLACK, DARK NAVY



BLACK

USS-1 X

CABAN, POCHE GANSÉE CUIR, 70% LAINE, 30% NYLON
PEACOCK, LEATHER PIPING ON POCKETS, 70% WOOL, 30% NYLON
DARK NAVY



DARK NAVY



USA

740

CABAN US, DOUBLE BOUTONNAGE, LAINE
US NAVAL PEACOCK, DOUBLE BREASTED, WOOL
NAVY



NAVY



USA

740C

CABAN US FITTÉ, DOUBLE BOUTONNAGE, GANSÉ CUIR,
DOUBLURE SATIN ROUGE, LAINE
FITTED US NAVAL PEACOCK, DOUBLE BREASTED,
LEATHER PIPING, RED SATIN LINING, WOOL
NAVY



NAVY



740 NAVY – P.25



MODS DARK NAVY – P.26

MAVERICK

MANTEAU OFFICIER, BOUTONNÉ ET ZIPPÉ, COL FAUSSE FOURRURE AMOVIBLE,
62% LAINE, 30% POLYESTER, 5% POLYAMIDE, 3% VISCOSE
OFFICER COAT, BUTTONED AND ZIPPED, REMOVABLE FAUX FUR COLLAR,
62% WOOL, 30% POLYESTER, 5% POLYAMIDE, 3% VISCOSE
BLACK



BLACK

MODS

PARKA M-51 FISHTAIL, CAPUCHE FIXE, DOUBLURE FAUSSE FOURRURE AMOVIBLE,
80% LAINE, 20% NYLON
M-51 FISHTAIL PARKA, FIXED HOOD, REMOVABLE FAUX FUR LINING,
80% WOOL, 20% NYLON
DARK NAVY



DARK NAVY

WARREN

DUFFLE-COAT, 70% LAINE, 30% NYLON
DUFFLE COAT, 70% WOOL, 30% NYLON
BLACK, DARK NAVY



BLACK

JKT 8705

BLOUSON TEDDY, 70% LAINE, 30% NYLON
VARSITY JACKET, 70% WOOL, 30% NYLON
NAVY



NAVY





LCW 1601 D BLACK – P.79 | LC 1141 BLACK – P.30



PER 90

BLOUSON PERFECTO US SÉRIE LIMITÉE, 90ÈME ANNIVERSAIRE, COL AMOVIBLE EN PEAU DE MOUTON, DOUBLURE LAINE CHEVRON, VACHETTE CUIR GRAS
PERFECTO JACKET US, LIMITED SERIES, 90TH ANNIVERSARY, REMOVABLE SHEEPSKIN COLLAR, HERRINGBONE WOOL LINING, NAKED COWHIDE
BLACK

LIMITED
EDITION



WITHOUT
COLLAR

BLACK

30 CUIRS / LEATHERS

LC 1141

BLOUSON PERFECTO FITTÉ AVEC CEINTURE, CUIR D'AGNEAU VÉGÉTAL LAVÉ
FITTED PERFECTO JACKET WITH BELT, WASHED VEGETAL LAMBSKIN

BLACK



BLACK

LC 1142

BLOUSON PERFECTO FITTÉ, CUIR D'AGNEAU VÉGÉTAL LAVÉ
FITTED PERFECTO JACKET, WASHED VEGETAL LAMBSKIN

BLACK



BLACK

LC 2317

BLOUSON PERFECTO, COL AMOVIBLE EN PEAU DE MOUTON, VACHETTE
PERFECTO JACKET, REMOVABLE SHEARLING COLLAR, COWHIDE

BLACK



WITHOUT
COLLAR

BLACK

LC ENFIELD 2

BLOUSON PERFECTO, COL AMOVIBLE EN PEAU DE MOUTON, VACHETTE
PERFECTO JACKET, REMOVABLE SHEARLING COLLAR, COWHIDE

BLACK



WITHOUT
COLLAR

BLACK

LC 1140

BLOUSON PERFECTO FITTÉ, CUIR D'AGNEAU
FITTED PERFECTO JACKET, LAMBSKIN
BLACK, BROWN



BLACK

LC 1140 ICON

BLOUSON PERFECTO FITTÉ, CUIR DE VACHETTE
FITTED PERFECTO JACKET, COWHIDE
BLACK X



BLACK X

618

BLOUSON PERFECTO US AVEC CEINTURE, VACHETTE
US PERFECTO JACKET WITH BELT, COWHIDE
BLACK



BLACK



615 J

BLOUSON PERFECTO À LACETS, CUIR DE TAUREAU
PERFECTO JACKET, LACED GUSSETS, STEERHIDE
BLACK



BLACK



LACED
GUSSETS

257 S

BLOUSON BOMBARDIER US TYPE B3, MOUTON DOUBLE FACE
US B3 BOMBER JACKET, DOUBLE FACE SHEEPSKIN
BROWN



BROWN

LC 1259 H

BLOUSON BOMBARDIER TYPE B3 AVEC CAPUCHE, MOUTON DOUBLE FACE
HOODED B3 BOMBER JACKET, DOUBLE FACE SHEEPSKIN
BLACK, BROWN, CORDOVAN



BLACK

LC 1259

BLOUSON BOMBARDIER TYPE B3, MOUTON DOUBLE FACE
B3 BOMBER JACKET, DOUBLE FACE SHEEPSKIN
BLACK, BROWN, CORDOVAN

**BIG
SIZES**

existe en grandes tailles / available in big sizes : LC 1259 GT



BLACK

BROWN

CORDOVAN

*new
color*

LC B 500

BOMBARDIER VINTAGE TYPE B-3, BADGÉ, MOUTON DOUBLE FACE
VINTAGE B-3 JACKET WITH PATCHES, DOUBLE FACE SHEEPSKIN

BROWN

existe sans badges / available without patches : LC B 500 X



BROWN

LC B 500 X
WITHOUT PATCHES

LC B 501

BOMBARDIER TYPE B-3, MOUTON DOUBLE FACE
B-3 JACKET, DOUBLE FACE SHEEPSKIN

BLACK



BLACK

LC WEAPON 18

BLACK : BLOUSON TYPE CWU, MOUTON DOUBLE FACE
BROWN : BLOUSON TYPE CWU, MOUTON DOUBLE FACE VINTAGE
BLACK : JACKET, TYPE CWU, DOUBLE FACE SHEEPSKIN
BROWN : JACKET, TYPE CWU, VINTAGE DOUBLE FACE SHEEPSKIN

BLACK, BROWN



BROWN

LC DUFFLE

TAUPE : MANTEAU BOUTONNÉ À CAPUCHE FIXE, MOUTON DOUBLE FACE SUÈDÉ
BROWN : MANTEAU BOUTONNÉ À CAPUCHE FIXE, MOUTON DOUBLE FACE VINTAGE
TAUPE : LONG BUTONNED FIXED HOOD COAT, DOUBLE FACE SHEEPSKIN SUEDE
BROWN : LONG BUTONNED FIXED HOOD COAT, VINTAGE DOUBLE FACE SHEEPSKIN
BROWN, TAUPE



BROWN



TAUPE

LC CABAN

CANADIENNE BOUTONNÉE, MOUTON DOUBLE FACE
BUTONNED LONG COAT, DOUBLE FACE SHEEPSKIN
BROWN



BROWN

LC B 100

BLOUSON RÉTRO, MOUTON DOUBLE FACE
RETRO JACKET, DOUBLE FACE SHEEPSKIN
BLACK, RUST



RUST

LC B 100 S

BLOUSON RÉTRO SUÈDE, MOUTON DOUBLE FACE
SUEDED RETRO JACKET, DOUBLE FACE SHEEPSKIN
BROWN, TAUPE



BROWN

LC WESTERN

BLOUSON LOGAN, ZIPPÉ ET BOUTONNÉ, MOUTON SUÈDE DOUBLE FACE
LOGAN JACKET, ZIPPERED AND BUTONNED, DOUBLE FACE SHEEPSKIN SUÈDE
BROWN, TAUPE



BROWN

LC 9117

BLOUSON TRUCKER, MOUTON DOUBLE FACE, FINITIONS SUÈDÉES
TRUCKER JACKET, DOUBLE FACE SUEDED SHEEPSKIN
RUST



RUST

LC RANCH

BLOUSON WESTERN, ZIPPÉ ET BOUTONNÉ, DOUBLÉ SHERPA, CHÈVRE VELOURS
WESTERN JACKET, ZIPPERED AND SNAPPED, SHERPA LINING, GOAT SUEDE
NAVY, RUST



NAVY

184 SM

BLOUSON PILOTE US 2 EN 1, VACHETTE CUIR GRAS
2 IN 1 COMBO US PILOT JACKET, NAKED COWHIDE
BLACK, BROWN



BROWN

LC 5331 X

BLOUSON PILOTE VINTAGE, COL FAUSSE FOURRURE AMOVIBLE, CUIR DE VACHETTE VINTAGE
VINTAGE PILOT JACKET, REMOVABLE FAUX FUR COLLAR, VINTAGE COWHIDE
ANTIC BLACK, ANTIC BROWN
existe en grandes tailles / available in big sizes : LC 5331 X GT



ANTIC BROWN

LC 1380

BLOUSON PILOTE AVEC COL EN MOUTON ET GILET EN NYLON AMOVIBLES, CUIR DE VACHETTE
PILOT JACKET WITH REMOVABLE LINER AND SHEEPSKIN COLLAR, NAKED COWHIDE
BLACK, DARK BROWN



BLACK

LC 930 D

BLOUSON PILOTE AVEC COL FAUSSE FOURRURE AMOVIBLE, CUIR DE VACHETTE
PILOT JACKET WITH REMOVABLE FAUX FUR COLLAR, COW WAXY
BLACK, DARK BROWN
existe en grandes tailles / available in big sizes : LC 930 D GT



BLACK

LC 2412

BLOUSON PILOTE, COL AMOVIBLE EN PEAU DE MOUTON, VACHETTE
 FLIGHT JACKET, REMOVABLE SHEARLING COLLAR, COWHIDE
 BLACK, BROWN, BLACK + BLACK FUR



BROWN

WITHOUT COLLAR

new color

BLACK + BLACK FUR

BLACK

LC 2412 BD

BLOUSON PILOTE BADGÉ, COL AMOVIBLE EN PEAU DE MOUTON, VACHETTE
 PATCHED FLIGHT JACKET, REMOVABLE SHEARLING COLLAR, COWHIDE
 BROWN



WITHOUT COLLAR

BROWN

LC CWU

BLOUSON PILOTE, TYPE CWU, COL AMOVIBLE EN PEAU DE MOUTON, AGNEAU
 PILOT JACKET, TYPE CWU, REMOVABLE SHEARLING COLLAR, LAMBSKIN
 BLACK



WITHOUT COLLAR

BLACK

LC STRIKE

BLOUSON DOWNTOWN, AGNEAU
 DOWNTOWN JACKET, LAMBSKIN
 BLACK



BLACK

LC OFFICIER

BLOUSON PILOTE, COL AMOVIBLE EN PEAU DE MOUTON, VACHETTE
FLIGHT JACKET, REMOVABLE SHEARLING COLLAR, COWHIDE
BLACK



BLACK

LC OFFICIER S

BLOUSON PILOTE, COL AMOVIBLE EN PEAU DE MOUTON, CHÈVRE VELOURS
FLIGHT JACKET, REMOVABLE SHEARLING COLLAR, GOAT SUEDE
RUST



WITHOUT
COLLAR

RUST

LC 2410 S

BLOUSON PILOTE, COL AMOVIBLE EN PEAU DE MOUTON, CHÈVRE VELOURS
FLIGHT JACKET, REMOVABLE SHEARLING COLLAR, GOATSKIN SUEDE
NAVY, RUST



WITHOUT
COLLAR

NAVY



WITHOUT
COLLAR

RUST

LC 3017

BOMBER CASUAL, VELOURS DE CHÈVRE
CASUAL BOMBER JACKET, GOATSKIN SUEDE
BROWN, DARK BEIGE, NAVY, RUST



LC 3017 RUST – P.39

LC FIELDON

VESTE DE COMBAT TYPE M-51, CHÈVRE VELOURS
M-51 FIELD JACKET, GOAT SUEDE
RUST



RUST

40 CUIRS / LEATHERS

LC CRUISER

BLOUSON MOTARD, CHÈVRE VELOURS
BIKER JACKET, GOAT SUEDE

DARK BEIGE



DARK BEIGE

LC JOE

BLOUSON MOTARD, VACHETTE
BIKER JACKET, COWHIDE

BLACK



BLACK

LC JULES

BLOUSON MOTARD, VACHETTE
BIKER JACKET, COWHIDE

BLACK, BROWN



BLACK

LC FUEL

BLOUSON MOTARD, AGENAU
BIKER JACKET, LAMBSKIN

BLACK



BLACK

LC 940 D

BLOUSON MOTARD CLASSIQUE, CUIR DE VACHETTE
CLASSIC RACER JACKET, COW WAXY

BLACK

existe en grandes tailles / available in big sizes : [LC 940 D GT](#)



BLACK

LC 949 D

BLOUSON MOTARD CLASSIQUE, CUIR D'AGNEAU

CLASSIC RACER JACKET, LAMBSKIN

BLACK



BLACK

LC 949 D WSD

BLOUSON MOTARD CLASSIQUE, CUIR D'AGNEAU LAVÉ

CLASSIC RACER JACKET, WASHED LAMBSKIN

BROWN



BLACK

LC WHEEL

BLOUSON POLICE, COL AMOVIBLE EN PEAU DE MOUTON, VACHETTE

POLICE JACKET, REMOVABLE SHEARLING COLLAR, COWHIDE

BLACK



WITHOUT COLLAR

BLACK

42 CUIRS / LEATHERS

LC 5100

BLOUSON CASUAL, CUIR DE VACHETTE
CASUAL JACKET, COW WAXY
BLACK, DARK BROWN



BLACK

LC 952

BLOUSON CASUAL, VACHETTE
CASUAL JACKET, COWHIDE
BLACK, BROWN



BROWN

LC DOWN 2

DOUDOUNE URBAN, COL MOUTON, REMBOURRAGE POLYESTER, AGNEAU
URBAN PUFFER JACKET, SHEARLING COLLAR, POLYESTER PADDING, LAMBSKIN
BLACK



BLACK

LC 950 X

DOUDOUNE CUIR, CAPUCHE ET FAUSSE FOURRURE AMOVIBLES,
REMBOURRAGE POLYESTER, AGNEAU
LEATHER BUBBLE JACKET, REMOVABLE HOOD AND FAUX FUR,
POLYESTER PADDING, LAMBSKIN
BLACK



WITHOUT FUR

WITHOUT HOOD

BLACK

LC BALL

BLOUSON TEDDY AVEC BRODERIES ET PATCHE, ZIPPÉ ET PRESSIONNÉ, CORPS : 70% LAINE, 30% NYLON, MANCHES : VACHETTE
 VARSITY JACKET WITH EMBROIDERIES AND PATCH, ZIPPERED AND SNAPPED, BODY : 70% WOOL, 30% NYLON, SLEEVES : COWHIDE
 HEATHER GREY + BLACK, NAVY + OFF WHITE



HEATHER GREY + BLACK

NAVY + OFF WHITE

LC 8705

BLOUSON TEDDY, CORPS : 100% LAINE, MANCHES : VACHETTE
 VARSITY JACKET, BODY : 100% WOOL, SLEEVES : COWHIDE
 BLACK + BLACK, NAVY + BEIGE

LC BASEBALL

BLOUSON TEDDY, ZIPPÉ ET PRESSIONNÉ, CORPS : 100% LAINE, MANCHES : 100% AGNEAU
 VARSITY JACKET, ZIPPERED AND SNAPPED, BODY : 100% WOOL, SLEEVES : 100% LAMBSKIN
 BLACK



BACK

BLACK + BLACK

NAVY + BEIGE



BLACK



PL DUNCAN HEATHER GREY – P45

PL DUNCAN

BIG PULL À CÔTES ET À CAPUCHE, DOUBLURE SHERPA, 85% ACRYLIQUE, 15% LAINE
 HOODED RIBBED KNITJACK, SHERPA LINING, 85% ACRYLIC, 15% WOOL
 BLACK, HEATHER ANTHRACITE, HEATHER GREY



HEATHER GREY

PL DUNLIN 2

BIG PULL DOUBLURE SHERPA, 85% ACRYLIQUE, 15% LAINE
 KNITJACK WITH SHERPA LINING, 85% ACRYLIC, 15% WOOL
 BLACK, HEATHER ANTHRACITE, HEATHER GREY



HEATHER ANTHRACITE

PL FRANKIE 1

BIG PULL CARDIGAN DOUBLURE SHERPA, 75% ACRYLIQUE, 13% LAINE, 12% POLYAMIDE
 KNITJACK CARDIGAN, SHERPA LINING 85% ACRYLIC, 13% WOOL, 12% NYLON
 HEATHER GREY, NAVY



HEATHER GREY

PL SHELTER

BIG PULL BOMBARDIER, DOUBLURE SHERPA, EMPÉCEMENTS CUIRS,
 85% ACRYLIQUE, 15% LAINE
 BOMBER KNITJACK, SHERPA LINING, LEATHER DETAILS,
 85% ACRYLIC, 15% WOOL
 BLACK, HEATHER ANTHRACITE



BLACK

HEATHER ANTHRACITE
 PATCH

PL OUTRIDER 1

PULL ARMY RAS DU COU AVEC BOUTONNIÈRE ÉPAULE, BOUTONS GRAVÉS "ANCRE",
75% ACRYLIQUE, 13% LAINE, 12% POLYAMIDE
ARMY CREW-NECK SWEATER WITH SHOULDER ANCHOR BUTTON PLACKET, ENGRAVED "ANCHOR" BUTTONS,
75% ACRYLIC, 13% WOOL, 12% POLYAMIDE
ANTHRACITE, BLACK, BORDEAUX, NATURAL, NAVY, NAVY + NATURAL



PL OUTRIDER 3

CARDIGAN ARMY, COL BOUTONNÉ, BOUTONS GRAVÉS "ANCRE",
75% ACRYLIQUE, 13% LAINE, 12% POLYAMIDE
ARMY CARDIGAN, BUTTON-DOWN COLLAR, ENGRAVED "ANCHOR" BUTTONS,
75% ACRYLIC, 13% WOOL, 12% POLYAMIDE
ANTHRACITE



ANTHRACITE

PL OUTRIDER 7

CARDIGAN, BOUTONS GRAVÉS "ANCRE", 75% ACRYLIQUE, 13% LAINE, 12% POLYAMIDE
CARDIGAN, ENGRAVED "ANCHOR" BUTTONS, 75% ACRYLIC, 13% WOOL, 12% NYLON
NATURAL, NAVY



NAVY

PL OUTRIDER 4

PULL ARMY, COL CAMIONNEUR BOUTONNÉ, BOUTONS GRAVÉS "ANCRE",
75% ACRYLIQUE, 13% LAINE, 12% POLYAMIDE
ARMY SWEATER, BUTTON-DOWN COLLAR, ENGRAVED "ANCHOR" BUTTONS,
75% ACRYLIC, 13% WOOL, 12% POLYAMIDE
ANTHRACITE, BLACK, HEATHER BLUE, NATURAL, NAVY



BLACK



48 PULLS / SWEATERS

PL OUTSTAR 1

PULL ARMY CHINÉ RAS DU COU AVEC BOUTONNIÈRE ÉPAULE, FIBRES RECYCLÉES ECOTWEED, 66% ACRYLIQUE, 11% LAINE, 12% POLYAMIDE, 6% SOIE, 5% AUTRES FIBRES
ARMY CREW-NECK HEATHER SWEATER WITH SHOULDER BUTTON PLACKET, ECOTWEED RECYCLED YARN, 66% ACRYLIC, 11% WOOL, 12% NYLON, 6% SILK, 5% OTHERS FIBERS
HEATHER GREY, NAVY

ECO FRIENDLY



NAVY



PL RAGE 2 NAVY – P.53

PL OUTFOX

PULL RAS DU COU AVEC BOUTONNIÈRE ÉPAULE, DRAPEAU US JACQUARD, 75% ACRYLIQUE, 13% LAINE, 12% POLYAMIDE
CREW-NECK SWEATER WITH SHOULDER BUTTON PLACKET, U.S JACQUARD FLAG, 75% ACRYLIC, 13% WOOL, 12% POLYAMIDE
NAVY



NAVY

PL OUTLAST

PULL RAS DU COU AVEC BOUTONNIÈRE ÉPAULE, MOTIF "ANCRE USN" JACQUARD, 75% ACRYLIQUE, 13% LAINE, 12% POLYAMIDE
CREW-NECK SWEATER WITH SHOULDER BUTTON PLACKET, USN JACQUARD ANCHOR, 75% ACRYLIC, 13% WOOL, 12% POLYAMIDE
ANTHRACITE



ANTHRACITE

PL YANK 1

PULL RAS DU COU AVEC EMPIÈCEMENTS LAINE SUR ÉPAULES ET COUDES,
50% COTON, 50% ACRYLIQUE
CREW-NECK SWEATER WITH WOOLEN YOKES ON SHOULDERS AND ELBOWS,
50% COTTON, 50% ACRYLIC
ANTHRACITE, BLACK, NAVY



ELBOWS YOKES

NAVY

PL YANK 2

PULL CAMIONNEUR AVEC EMPIÈCEMENTS LAINE SUR ÉPAULES ET COUDES,
50% COTON, 50% ACRYLIQUE
TRUCKER SWEATER WITH WOOLEN YOKES ON SHOULDERS AND ELBOWS,
50% COTTON, 50% ACRYLIC
ANTHRACITE, BLACK, NAVY



NAVY
ELBOWS YOKES

ANTHRACITE

PL YANK 3

CARDIGAN AVEC EMPIÈCEMENTS LAINE SUR ÉPAULES ET COUDES,
50% COTON, 50% ACRYLIQUE
CARDIGAN WITH WOOLEN YOKES ON SHOULDERS AND ELBOWS,
50% COTTON, 50% ACRYLIC
ANTHRACITE, BLACK, NAVY



ANTHRACITE
ELBOWS YOKES

BLACK

PL YANK 4

PULL COL ROULÉ, AVEC EMPIÈCEMENTS LAINE SUR ÉPAULES ET COUDES,
50% COTON, 50% ACRYLIQUE
TURTLENECK SWEATER WITH WOOLEN YOKES ON SHOULDERS AND ELBOWS,
50% COTTON, 50% ACRYLIC
ANTHRACITE, NAVY



ANTHRACITE
ELBOWS YOKES

NAVY

50 PULLS / SWEATERS

PL YANKER 1

PULL RAS DU COU, TORSADÉ, 50% COTON, 50% ACRYLIQUE
CABLE CREWNECK SWEATER, 50% COTTON, 50% ACRYLIC
NAVY



NAVY

PL YANKER 2

PULL COL MONTANT ZIPPÉ, TORSADÉ, 50% COTON, 50% ACRYLIQUE
CABLE SWEATER, ZIP COLLAR, 50% COTTON, 50% ACRYLIC
ANTHRACITE, BLACK, NAVY



ANTHRACITE

PL CLIPPER 1

PULL RAS DU COU, RAGLAN, JEU DE CÔTES, 50% COTON, 50% ACRYLIQUE
CREW NECK SWEATER, RAGLAN, DUAL RIB PATTERN, 50% COTTON, 50% ACRYLIC
NAVY



NAVY

PL CLIPPER 2

PULL COL MONTANT ZIPPÉ, JEU DE CÔTES, 50% COTON, 50% ACRYLIQUE
SWEATER, 1/4 ZIP COLLAR, DUAL RIB PATTERN, 50% COTTON, 50% ACRYLIC
ANTHRACITE



ANTHRACITE

PL BARKLEY 1

PULL COL MONTANT ZIPPÉ ET BOUTONNÉ, MAILLE TRESSÉE, 50% COTON, 50% ACRYLIQUE
SWEATER, 1/4 ZIP AND BUTTON COLLAR, BRAIDED KNIT, 50% COTTON, 50% ACRYLIC

MASTIC, NAVY



MASTIC

PL BARKLEY 2

CARDIGAN ZIPPÉ, MAILLE TRESSÉE, 50% COTON, 50% ACRYLIQUE
ZIPPERED CARDIGAN, BRAIDED KNIT, 50% COTTON, 50% ACRYLIC

BLACK



BLACK

PACK

PL PACK

PULL COL V, 50% LAINE, 25% COTON, 25% NYLON
V-NECK SWEATER, 50% WOOL, 25% COTTON, 25% NYLON

ANTHRACITE, BLACK, HEATHER GREY, NAVY



HEATHER GREY

PACK

PL PACK 2

PULL RAS DU COU, 50% LAINE, 25% COTON, 25% NYLON
CREW-NECK SWEATER, 50% WOOL, 25% COTTON, 25% NYLON

ANTHRACITE, BLACK, HEATHER GREY, NAVY



NAVY

PL MILFORD 9

PULL COL CAMIONNEUR ZIPPÉ ET BOUTONNÉ, 50% ACRYLIQUE, 50% COTON
TRUCKER SWEATER WITH ZIP AND BUTTON COLLAR, 50% ACRYLIC, 50% COTTON
ANTHRACITE, BEIGE MIX, BLACK, BLACK MIX, MEDIUM HEATHER GREY, NAVY



ANTHRACITE

BEIGE MIX



BLACK

MEDIUM HEATHER GREY



BLACK MIX



NAVY

PL MILFORD 4

PULL RAS DU COU, 50% ACRYLIQUE, 50% COTON
 CREW-NECK SWEATER, 50% ACRYLIC, 50% COTTON
 BLACK, MEDIUM HEATHER GREY, NAVY



BLACK

MEDIUM HEATHER GREY

NAVY

PL RAGE 1

CARDIGAN ZIPPÉ, 50% COTON, 50% ACRYLIQUE
 ZIPPERED CARDIGAN, 50% COTTON, 50% ACRYLIC
 ANTHRACITE, BLACK, NATURAL, NAVY



NAVY

PATCH

PL RAGE 2

PULL CAMIONNEUR, 50% COTON, 50% ACRYLIQUE
 TRUCKER SWEATER, 50% COTTON, 50% ACRYLIC
 ANTHRACITE, BLACK, NATURAL, NAVY



ANTHRACITE

PATCH



SW CREW HEATHER GREY – P.55

SW CREW

SWEATSHIRT RAS DU COU, SÉRIGRAPHIÉ SCHOTT NYC, 100% COTON, 320G
 CREW-NECK SWEATSHIRT WITH SCHOTT NYC PRINT, 100% COTTON, 320GR
 BLACK, HEATHER GREY, NAVY, OFF WHITE



BLACK

HEATHER GREY

NAVY

OFF WHITE

new color

SW CREW 28

SWEATSHIRT RAS DU COU, SÉRIGRAPHIÉ VARSITY, 100% COTON
 CREW-NECK SWEATSHIRT, VARSITY PRINT, 100% COTTON
 BLACK, HEATHER GREY



HEATHER GREY

BLACK

SW NOAH

SWEATSHIRT RAGLAN RAS DU COU AVEC LETTRES APPLIQUÉES EN NYLON, 100% COTON
 CREW-NECK RAGLAN SWEATSHIRT WITH NYLON APPLIQUE LETTERS, 100% COTTON
 NAVY, CAMO + BLACK, WHITE



CAMO + BLACK

NAVY

SW ZIP

SWEATSHIRT ZIPPÉ À CAPUCHE, 100% COTON
ZIP HOODIE, 100% COTTON
BLACK, HEATHER GREY, NAVY



BLACK

HEATHER GREY

NAVY



SW HOOD 28 BLACK – P.57

SW HOOD

SWEATSHIRT À CAPUCHE SÉRIGRAPHIÉ SCHOTT NYC, 100% COTON, 320G
 HOODED SWEATSHIRT WITH SCHOTT NYC PRINT, 100% COTTON, 320GR
 BLACK, HEATHER GREY, NAVY, OFF WHITE



BLACK

HEATHER GREY

NAVY

OFF WHITE

SW HOOD 28

SWEATSHIRT À CAPUCHE, SÉRIGRAPHIÉ VARSITY, 100% COTON
 HOODED SWEATSHIRT, VARSITY PRINT, 100% COTTON
 BLACK, HEATHER GREY



BLACK

HEATHER GREY



TS LOGO WHITE – P.59

TS LOGO

T-SHIRT IMPRIMÉ SCHOTT NYC, 100% COTON

T-SHIRT, SCHOTT NYC PRINT, 100% COTTON

BLACK, BLACK + CAMO, BORDEAUX, CAMO KHAKI, DARK RED, HEATHER GREY, HEATHER GREY + CAMO, NAVY + CAMO, NAVY, WHITE + CAMO, WHITE



60 T-SHIRTS

TS LOGO MIX

T-SHIRT CHINÉ, 100% COTON "PEACHED"
HEATHER T-SHIRT, 100% COTON "PEACHED"
HEATHER DENIM, HEATHER LIGHT BLUE, HEATHER LIGHT GREY



HEATHER DENIM

HEATHER LIGHT BLUE

HEATHER LIGHT GREY

TS 01 MC LOGO

PACK

PACK DE 2 T-SHIRTS RAS DU COU, MANCHES COURTES, LOGO SCHOTT NYC, 100% COTON
PACK OF 2 SHORT SLEEVES CREW-NECK T-SHIRTS, SCHOTT NYC LOGO, 100% COTTON
WHITE + BLACK



WHITE

BLACK

TS 01 MC

PACK

PACK DE 2 T-SHIRTS RAS DU COU, MANCHES COURTES, 100% COTON
PACK OF 2 SHORT SLEEVES CREW-NECK T-SHIRTS, 100% COTTON
WHITE + BLACK



WHITE

BLACK

TS LOGO MIX ML

T-SHIRT CHINÉ, RAS DU COU, SÉRIGRAPHIÉ SCHOTT NYC, MANCHES LONGUES, 100% COTON "PEACHED"
 HEATHER CREW-NECK T-SHIRT, SCHOTT NYC PRINT, LONG SLEEVES, 100% COTON "PEACHED"
 BLACK, WHITE, HEATHER DENIM, HEATHER LIGHT GREY



HEATHER

HEATHER DENIM

BLACK

HEATHER LIGHT GREY

WHITE



TS LOGO HEATHER GREY + CAMO – P59

TS 018 ML

T-SHIRT RAS DU COU, MANCHES LONGUES, SÉRIGRAPHIÉ VARSITY, 100% COTON
 CREW-NECK T-SHIRT, LONG SLEEVES, VARSITY PRINT, 100% COTTON
 BLACK, WHITE



WHITE

BLACK



TR BATTLE 70 PK KHAKI – P.63

TR BATTLE 70 PKR

PANTALON ARMY MULTIPOCHES AVEC CEINTURE, SURTEINT, 100% COTON PIQUÉ
 MULTIPOCKET BELTED ARMY PANTS, GARMENT DYED, 100% PIQUÉ COTTON
 ARMY BEIGE, BLACK, CAMEL, KHAKI, SAGE KHAKI, OLIVE, TOBACCO



ARMY BEIGE

BLACK

CAMEL

KHAKI

SAGE KHAKI

OLIVE

TOBACCO

CARGO US 70

PANTALON ARMY MULTIPOCHES AVEC CEINTURE, 65% COTON, 35% NYLON
 MULTIPOCKET BELTED ARMY PANTS, 65% COTTON, 35% NYLON
 BLACK, CIMENT, KHAKI, WORK BEIGE



BLACK

TR BATTLE 70 PK

PANTALON ARMY MULTIPOCHES AVEC CEINTURE, 100% COTON PIQUÉ ET SABLÉ
 MULTIPOCKET BELTED ARMY PANTS, 100% SANDBLAST PIQUÉ COTTON
 BLACK, KHAKI, TOBACCO



KHAKI



JKT JIBSAIL W DARK NAVY – P.72

JKT HEAT 2 W

PARKA FISHTAIL, CAPUCHE FIXE, COUPE CONFORT,
GILET QUILTÉ AMOVIBLE AVEC CAPUCHE FOURRURE, 70% POLYESTER, 30% VISCOSE
FISHTAIL PARKA, FIXED HOOD, COMFORT FIT,
REMOVABLE QUILTED VEST WITH FUR HOOD, 70% POLYESTER, 30% VISCOSE
NAVY



WITHOUT FUR

NAVY

JKT MISTY 2 W

PARKA, CAPUCHE FIXE, FAUSSE FOURRURE AMOVIBLE,
PLASTRON AMOVIBLE À CAPUCHE EN FAUSSE FOURRURE, 70% COTON, 30% VISCOSE
PARKA WITH FIXED HOOD, REMOVABLE FAUX FUR,
REMOVABLE FAUX FUR HOODED FRONT PLACKET, 70% COTTON, 30% VISCOSE
BLACK, NAVY



WITHOUT FUR



WITHOUT HOODED FRONT PLACKET

BLACK

JKT MISTY W

PARKA COURTE, CAPUCHE FIXE, FAUSSE FOURRURE AMOVIBLE,
PLASTRON AMOVIBLE À CAPUCHE EN FAUSSE FOURRURE, 70% COTON, 30% VISCOSE
SHORT PARKA WITH FIXED HOOD, REMOVABLE FAUX FUR,
REMOVABLE FAUX FUR HOODED FRONT PLACKET, 70% COTTON, 30% VISCOSE
BLACK, NAVY

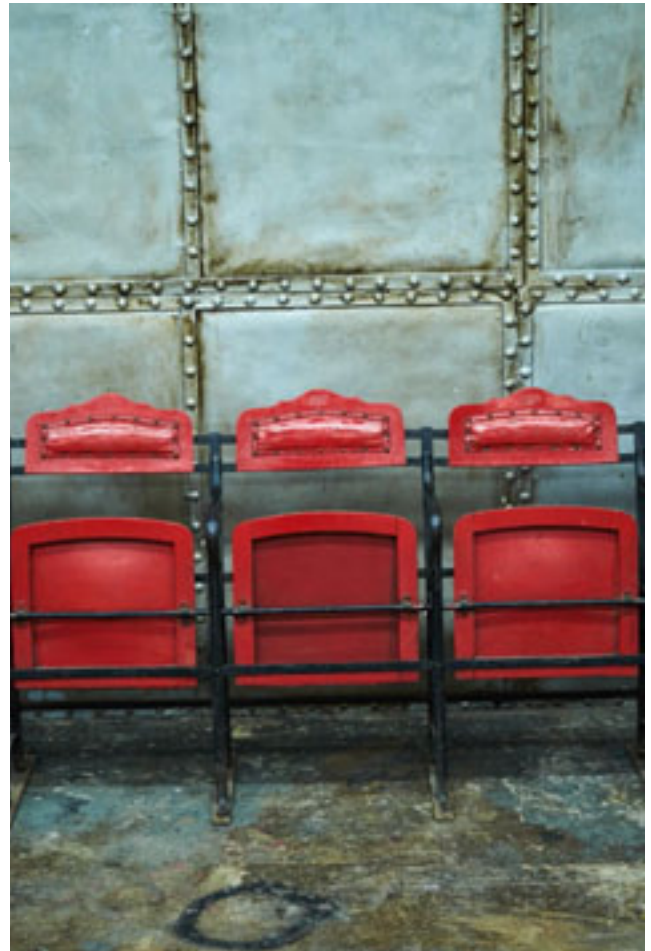


WITHOUT FUR



WITHOUT FRONT PLACKET

NAVY



Duck feathers

JKT LUCIA W

PARKA ARMY "FISHTAIL", PLUMES DE CANARD, CAPUCHE FIXE, FAUSSE FOURRURE AMOVIBLE, 100% NYLON
 "FISHTAIL" ARMY PARKA, DUCK DOWN, FIXED HOOD, REMOVABLE FAUX FUR, 100% NYLON
 BLACK, DARK RED, KHAKI, NAVY, WHITE



WITHOUT FAUX FUR

DARK RED BLACK KHAKI NAVY WHITE

new color

Duck feathers

JKT CAMILLE 2 W

DOUDOUNE LONGUE, GARNIE PLUMES DE CANARD, CAPUCHE ET FAUSSE FOURRURE AMOVIBLES, 60% COTON, 40% NYLON
 LONG DUCK DOWN JACKET, REMOVABLE HOOD AND FAUX FUR, 60% COTTON, 40% NYLON
 BLACK + BLACK, NAVY



WITHOUT FAUX FUR

BLACK + BLACK

NAVY

Duck feathers

JKT FREYA 2 W

PARKA PLUMES DE CANARD, CAPUCHE ET FAUSSE FOURRURE AMOVIBLES, 60% COTON, 40% NYLON
 DUCK DOWN PARKA, REMOVABLE HOOD AND FAUX FUR, 60% COTTON, 40% NYLON
 BLACK + BLACK, BLACK, DARK KHAKI, OCEAN, WHITE



WITHOUT HOOD

WHITE

BLACK + BLACK

JKT HALL W

PARKA À CAPUCHE FIXE, FAUSSE FOURRURE AMOVIBLE, PLASTRON AMOVIBLE À CAPUCHE EN FAUSSE FOURRURE, 100% COTON LAVÉ
 PARKA WITH FIXED HOOD, REMOVABLE FAUX FUR, REMOVABLE FAUX FUR HOODED FRONT PLACKET, 100% WASHED COTTON
 BLACK 2, KHAKI, NAVY



BLACK 2

KHAKI

NAVY



WITHOUT FUR



WITHOUT HOODED FRONT PLACKET

JKT HALL 2 W

PARKA À CAPUCHE FIXE, FAUSSE FOURRURE AMOVIBLE, PLASTRON À CAPUCHE EN FAUSSE FOURRURE AMOVIBLE, 100% NYLON
 PARKA WITH FIXED HOOD, REMOVABLE FAUX FUR, REMOVABLE FAUX FUR HOODED FRONT PLACKET, 100% NYLON
 BLACK, NAVY



WITHOUT FUR

WITHOUT HOODED FRONT PLACKET

BLACK



JKT LUCIA W WHITE & DARK RED – P.66

68 BLOUSONS FEMME / LADIES JACKETS

JKT PEARL 2 W

BLOUSON TYPE N3-B À CAPUCHE FIXE, FAUSSE FOURRURE AMOVIBLE, 100% NYLON
N3-B TYPE JACKET WITH FIXED HOOD, REMOVABLE FAUX FUR, 100% NYLON

SAGE



WITHOUT FUR



SAGE

JKT VIRGINIA W

PARKA COURTE À CAPUCHE FIXE, FAUSSE FOURRURE AMOVIBLE, 100% COTON LAVÉ
SHORT PARKA WITH FIXED HOOD, REMOVABLE FAUX FUR, 100% WASHED COTTON

KHAKI



KHAKI

JKT MADDY W

BOMBER À CAPUCHE FIXE, COUPE CONFORT, PLASTRON,
FAUSSE FOURRURE AMOVIBLE, 100% NYLON LAVÉ
COMFORT FIT BOMBER JACKET, FIXED HOOD, CENTER FRONT PLACKET,
REMOVABLE FAUX FUR, 100% WASHED NYLON

NAVY + OFF WHITE, BLACK + BEIGE



WITHOUT FUR



CENTER FRONT
PLACKET



NAVY + OFF WHITE

JKT PEARL WX

BLOUSON TYPE N2-B À CAPUCHE FIXE, FAUSSE FOURRURE AMOVIBLE, 100% NYLON
N2-B TYPE JACKET WITH FIXED HOOD, REMOVABLE FAUX FUR, 100% NYLON

NAVY



NAVY

Duck feathers

JKT DENISE W X

BLOUSON À CAPUCHE FIXE, FAUSSE FOURRURE AMOVIBLE, GARNI 50% PLUME DE CANARD, 50% DUVET DE CANARD, 100% NYLON
DOWN JACKET, FIXED HOOD, REMOVABLE FAUX FUR, FILLED WITH 50% DUCK FEATHERS, 50% DUCK DOWN, 100% NYLON
BLACK, DARK RED, NAVY



JKT PEARL 2 W SAGE – P68 | 211 VINT BLACK – P14

70 BLOUSONS FEMME / LADIES JACKETS

Duck feathers

JKT LILIAN WX

PARKA COURTE À CAPUCHE FIXE, FAUSSE FOURRURE AMOVIBLE, GARNIE 60% PLUMES DE CANARD, 40% DUVET DE CANARD, HAUT : 100% NYLON, BAS : 60% COTON, 40% NYLON
 SHORT DOWN PARKA WITH FIXED HOOD, REMOVABLE FAUX FUR, FILLED WITH 60% DUCK FEATHERS, 40% DUCK DOWN, TOP : 100% NYLON, BOTTOM : 60% COTTON, 40% NYLON
 BLACK, DARK RED + NAVY



WITHOUT FUR



BLACK

DARK RED + NAVY

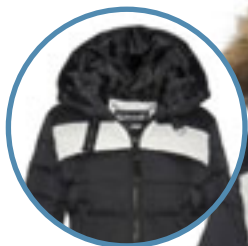
NAVY

new color

Duck feathers

JKT LILIAN W

PARKA COURTE À CAPUCHE FIXE, FOURRURE TANUKI AMOVIBLE, GARNIE 60% PLUMES DE CANARD, 40% DUVET DE CANARD, HAUT : 100% NYLON, BAS : 60% COTON, 40% NYLON
 SHORT DOWN PARKA WITH FIXED HOOD, REMOVABLE TANUKI FUR, FILLED WITH 60% DUCK FEATHERS, 40% DUCK DOWN, TOP : 100% NYLON, BOTTOM : 60% COTTON, 40% NYLON
 BLACK, BLACK + OFF-WHITE, NAVY



WITHOUT FUR



BLACK + OFF WHITE

new color

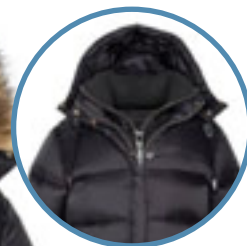
Duck feathers

JKT MAYDAY WX

DOUDOUNE À PLASTRON, CAPUCHE ET FAUSSE FOURRURE AMOVIBLES, GARNIE 50% PLUMES DE CANARD, 50% DUVET DE CANARD, 100% NYLON
 DOWN JACKET, CENTER FRONT PLACKET, REMOVABLE HOOD AND FAUX FUR, FILLED WITH 50% DUCK FEATHERS, 50% DUCK DOWN, 100% NYLON
 BLACK

existe avec fourrure tanuki / available with tanuki fur : JKT MAYDAY W

TANUKI FUR
or
FAUX FUR



WITHOUT FUR



BLACK



CENTER FRONT PLACKET

Duck feathers

JKT DYNA W

PERFECTO DOUDOUNÉ, GARNI 50% PLUMES DE CANARD, 50% DUVET DE CANARD, 100% NYLON
DOWN PERFECTO JACKET, FILLED WITH 50% DUCK FEATHERS, 50% DUCK DOWN, 100% NYLON
BLACK, RED



BLACK



RED

JKT W JANIS X

BLOUSON PERFECTO DENIM, 100% COTON
DENIM PERFECTO JACKET, 100% COTON
BLACK, BLUE RAIN, LIGHT PINK, RAW INDIGO, WHITE



RAW INDIGO

WHITE

BLACK

BLUE RAIN

LIGHT PINK

72 BLOUSONS FEMME / LADIES JACKETS

JKT MAINSAIL W

CABAN LONG, CEINTURE AMOVIBLE,
COL DÉTACHABLE LAINE MÉLANGÉE, 80% LAINE, 20% POLYAMIDE
LONG PEACOCK, REMOVABLE BELT,
DETACHABLE MIXED WOOL COLLAR, 80% WOOL, 20% NYLON
BLACK, CAMEL



WITHOUT
COLLAR



LINING



BLACK

JKT AC VELVET W

CO-BRANDING SCHOTT X AMERICAN COLLEGE
BOMBER MA-1 FITTÉ, VELOURS, DOUBLURE MOTIF CACHEMIRE, 100% COTON
FITTED MA-1 BOMBER JACKET, VELVET SHELL, PAISLEY LINING, 100% COTTON
BLACK, BURGUNDY, NAVY, SAGE



LINING



SAGE

JKT JIBSAIL W

CABAN, COL AMOVIBLE LAINE MÉLANGÉE, 80% LAINE, 20% POLYAMIDE
PEACOCK, REMOVABLE MIXED WOOL COLLAR, 80% WOOL, 20% NYLON
BLACK, DARK NAVY



WITHOUT
COLLAR



LINING



DARK NAVY

JKT AC RAINBO W

CO-BRANDING SCHOTT X AMERICAN COLLEGE
BOMBERS MA-1 FITTÉ, 80'S, 100% NYLON
FITTED MA-1 BOMBER JACKET, 80'S, 100% NYLON
FLAG, FUNKY, MAKE UP, SPRING



MAKE UP

UNISEX

210100

BLOUSON PILOTE CWU DOUBLURE ORANGE, 100% NYLON
 CWU PILOT JACKET, ORANGE LINING, 100% NYLON
 BLACK, NAVY, ARMY KHAKI



BLACK

JKT PILOTE W

BLOUSON PILOTE, COL FAUX MOUTON AMOVIBLE, 100% NYLON
 PILOT JACKET, REMOVABLE FAKE SHEEP COLLAR, 100% NYLON
 NAVY, SAGE



SAGE



NAVY
 WITHOUT COLLAR

JKT AC W

CO-BRANDING SCHOTT X AMERICAN COLLEGE
 BOMBERS MA-1 FITTÉ, 100% NYLON
 FITTED MA-1 BOMBER JACKET, 100% NYLON
 ARMY KHAKI, BLACK, BLUSH, BORDEAUX, GREEN, GREY, KHAKI, NAVY, ROSE, ROSEWOOD, SAGE STRIPES



UNISEX

JKT ALASKA

DOUDOUNE UNISEXE, OVERSIZE, CAPUCHE FIXE, REMBOURRAGE POLYESTER, 65% COTON, 35% NYLON

UNISEX POLY FILL JACKET, OVERSIZE, FIXED HOOD, POLYESTER PADDING, 65% COTTON, 35% NYLON

BLACK, BLUSH, MILITARY GREEN + BLUSH, MILITARY GREEN, NAVY, ORANGE, PALE BLUE, ROYAL BLUE, RED, RED + PALE BLUE, WHITE, YELLOW, YELLOW + ROYAL BLUE



BLACK

WHITE

YELLOW + ROYAL BLUE

NAVY

RED

ROYAL BLUE

MILITARY GREEN

PALE BLUE

YELLOW

BLUSH

RED + PALE BLUE

ORANGE

MILITARY GREEN + BLUSH

ORANGE

NEBRASKA

UNISEX

DOUDOUNE UNISEXE, OVERSIZE, CAPUCHE SOUS COL, REMBOURRAGE POLYESTER, 65% COTON, 35% NYLON
UNISEX POLY FILL JACKET, OVERSIZE, HIDDEN HOOD UNDER COLLAR, POLYESTER PADDING 65% COTTON, 35% NYLON
BLACK, BLUSH, BLACK + WHITE + RED, MILITARY GREEN, NAVY, ORANGE, PALE BLUE, ROYAL BLUE + WHITE + YELLOW, RED, ROYAL BLUE, WHITE, YELLOW



WHITE

ORANGE

MILITARY GREEN

BLACK

ROYAL BLUE

BLUSH

RED

YELLOW

NAVY

BLACK + WHITE + RED

ROYAL BLUE + WHITE + YELLOW

PALE BLUE

new color

new color



LCW 1256 NATURAL + DARK BROWN – P78 | LCW 1250 CAMEL – P78

LCW 1257

BLOUSON BOMBARDIER TYPE B-3, PEAU DE MOUTON LAINÉE
B-3 BOMBER JACKET, DOUBLE FACE SHEEPSKIN
BLACK, CORDOVAN, DARK BROWN, LIGHT BEIGE



BLACK

CORDOVAN

DARK BROWN

LIGHT BEIGE

LCW 1257 H

BLOUSON BOMBARDIER TYPE B-3 À CAPUCHE, PEAU DE MOUTON LAINÉE
HOODED B-3 BOMBER JACKET, DOUBLE FACE SHEEPSKIN
BLACK, CORDOVAN, DARK BROWN, LIGHT BEIGE



BLACK

LCW 1257 L

BLOUSON BOMBARDIER LONG TYPE B-3, PEAU DE MOUTON LAINÉE AVEC CEINTURE
LONG B-3 BOMBER JACKET, DOUBLE FACE SHEEPSKIN WITH BELT
BLACK, DARK BROWN, LIGHT BEIGE



LIGHT BEIGE

78 CUIRS FEMME / LADIES LEATHERS

LCW 1250

DUFFLE COAT BOUTONNÉ, CAPUCHE ET FOURRURE FIXE, PEAU DE MOUTON LAINÉE
 BUTONNED DUFFLE COAT, FIXED HOOD AND FUR, SUEDED DOUBLE FACE SHEEPSKIN
 CAMEL



CAMEL

LCW 1255 A

BLOUSON BOMBARDIER TYPE B-3, PEAU DE MOUTON LAINÉE
 B-3 BOMBER JACKET, DOUBLE FACE SHEEPSKIN SUEDE
 CAMEL



CAMEL

LCW 1256

BLOUSON BOMBARDIER TYPE B-3, DOUBLURE NYLON MATELASSÉE,
 PEAU DE MOUTON LAINÉE
 B-3 BOMBER JACKET, NYLON QUILTED LINING,
 DOUBLE FACE SHEEPSKIN
 NATURAL + DARK BROWN, NATURAL + NUDE



NATURAL
 + DARK BROWN

NATURAL
 + NUDE
 BACK

NATURAL + NUDE

LCW 86 DF

BLOUSON PERFECTO, DOUBLURE NYLON MATELASSÉE,
 CORPS : MOUTON DOUBLE FACE, MANCHES : CUIR D'AGNEAU
 PERFECTO JACKET, NYLON QUILTED LINING,
 BODY : DOUBLE FACE SHEEPSKIN, SLEEVES : LAMBSKIN
 BLACK + BLACK, BLACK + NATURAL



BACK

BLACK + BLACK

BLACK + NATURAL



LCW 8600 RED – P.79

LCW 8600

BLOUSON PERFECTO AVEC CEINTURE, CUIR D'AGNEAU ANILINE
PERFECTO JACKET WITH BELT, ANILINE LAMBSKIN
BLACK, OFF WHITE, PLUM, RED



BLACK

LCW 1601 D

BLOUSON PERFECTO SANS CEINTURE, CUIR D'AGNEAU ANILINE
PERFECTO JACKET WITHOUT BELT, ANILINE LAMBSKIN
BLACK, BLUSH, PLUM, RED



BLUSH

80 CUIRS FEMME / LADIES LEATHERS

LCW 860

GILET PERFECTO, CUIR D'AGNEAU
PERFECTO VEST, LAMBSKIN
BLACK, OFF WHITE, RED



RED

LCW 8600 L

PERFECTO LONG AVEC CEINTURE, COL AMOVIBLE EN PEAU DE MOUTON, CUIR D'AGNEAU ANILINE
LONG PERFECTO JACKET WITH BELT, REMOVABLE SHEEPSKIN COLLAR, ANILINE LAMBSKIN
BLACK



BLACK



WITHOUT COLLAR

LCW 2607

BLOUSON PERFECTO AVEC COL AMOVIBLE EN PEAU DE MOUTON, CUIR D'AGNEAU LAVÉ
PERFECTO JACKET WITH REMOVABLE SHEEPSKIN COLLAR, WASHED LAMBSKIN
BLACK, PLUM, RED
existe sans col / available without collar : LCW2607 X



BLACK



LCW 2607 X - RED
+ WITHOUT COLLAR

LCW 8612

BLOUSON PERFECTO AVEC CEINTURE AMOVIBLE, CUIR D'AGNEAU ANILINE
PERFECTO JACKET WITH REMOVABLE BELT, ANILINE, LAMBSKIN
BLACK



BLACK

LCW 2018 S

BLOUSON PERFECTO, COL AMOVIBLE EN PEAU DE MOUTON,
DOUBLURE SHERPA AMOVIBLE, CHÈVRE VELOURS
PERFECTO JACKET, REMOVABLE SHEEPSKIN COLLAR,
REMOVABLE SHERPA LINING, GOAT SUEDE
CAMEL



WITHOUT
COLLAR



CAMEL

LCW 2018

BLOUSON PERFECTO, COL AMOVIBLE EN PEAU DE MOUTON,
DOUBLURE SHERPA AMOVIBLE, CUIR D'AGNEAU VÉGÉTAL LAVÉ
PERFECTO JACKET, REMOVABLE SHEEPSKIN COLLAR,
REMOVABLE SHERPA LINING, VEGETAL SHEEPSKIN
BLACK



WITHOUT
COLLAR



BLACK

LCW DANY

BLOUSON PERFECTO DOUDOUNE, COL AMOVIBLE EN PEAU DE MOUTON,
REMBOURRAGE POLYESTER, CUIR D'AGNEAU
POLY FILL PERFECTO JACKET, REMOVABLE SHEEPSKIN COLLAR,
POLYESTER PADDING, LAMBSKIN
BLACK



WITHOUT
COLLAR



BLACK

LCW DANY H

DOUDOUNE, CAPUCHE FIXE, FOURRURE TANUKI AMOVIBLE,
REMBOURRAGE POLYESTER, CUIR D'AGNEAU
POLY FILL JACKET, FIXED HOOD, REMOVABLE TANUKI FUR,
POLYESTER PADDING, LAMBSKIN
BLACK

existe avec fausse fourrure / available with faux fur : **LCW DANY H X**

TANUKI FUR
or
FAUX FUR



WITHOUT FUR



BLACK

82 CUIRS FEMME / LADIES LEATHERS

LCW 9184

BLOUSON PILOTE, FERMETURE ZIPPÉE ET PRESSIONNÉE,
COL AMOVIBLE EN PEAU DE MOUTON, CUIR D'AGNEAU
PILOT JACKET, ZIPPED AND SNAPPED CLOSING,
REMOVABLE SHEEPSKIN COLLAR, LAMBSKIN
COGNAC



WITHOUT
COLLAR



COGNAC

LCW 2030 S

BLOUSON PILOTE, COL AMOVIBLE EN PEAU DE MOUTON, CHÈVRE VELOURS
FLIGHT JACKET, REMOVABLE SHEEPSKIN COLLAR, GOAT SUEDE
BROWN, CAMEL, NAVY



WITHOUT
COLLAR



CAMEL



NAVY

LCW LILY

TRENCH COAT, COL AMOVIBLE EN PEAU DE MOUTON, CHÈVRE VELOURS
TRENCH COAT, REMOVABLE SHEEPSKIN COLLAR, GOAT SUEDE
CAMEL



WITHOUT
COLLAR



CAMEL

LCW 2019

BLOUSON CAMIONNEUR, COL AMOVIBLE EN PEAU DE MOUTON,
DOUBLURE AMOVIBLE EN SHERPA, CUIR D'AGNEAU VÉGÉTAL LAVÉ
TRUCK JACKET, REMOVABLE SHEEPSKIN COLLAR AND SHERPA LINING,
VEGETAL SHEEPSKIN
COGNAC



WITHOUT
COLLAR



COGNAC

LCW HARVEY

BLOUSON MOTARD, CUIR D'AGNEAU ANILINE
RACER JACKET, ANILINE LAMBSKIN
BLACK, PLUM



BLACK

LCW 9641 A

BLOUSON CAFÉ RACER, CUIR D'AGNEAU ANILINE
CAFÉ RACER JACKET, ANILINE LAMBSKIN
BLACK



BLACK

LCW CHEERY 2

BLOUSON TEDDY, ZIPPÉ ET PRESSIONNÉ, CORPS : 70% LAINE, 30% NYLON, MANCHES : 100% CUIR DE VACHETTE
VARSITY JACKET, ZIPPERED AND SNAPPED, BODY : 70% WOOL, 30% NYLON, SLEEVES : 100% NAPPA COWHIDE
DARK NAVY + CREAM, RED + CREAM



DARK NAVY + CREAM

RED + CREAM



SW GINGER 2 W HEATHER GREY – P85

SW GINGER 1 W

SWEATSHIRT RAS DU COU, 100% COTON
CREW-NECK SWEATSHIRT, 100% COTTON
BLACK, BLUSH, HEATHER GREY, NAVY, OFF WHITE



BLACK

BLUSH

HEATHER GREY

NAVY

OFF WHITE

SW GINGER 2 W

SWEATSHIRT À CAPUCHE, 100% COTON
HOODED SWEATSHIRT, 100% COTTON
BLACK, BLUSH, HEATHER GREY, NAVY, OFF WHITE



BLACK

BLUSH

HEATHER GREY

NAVY

OFF WHITE

TS LOGO W

T-SHIRT IMPRIMÉ SCHOTT NYC, 94% COTON 6% ÉLASTHANE

T-SHIRT, SCHOTT NYC PRINT, 94% COTTON 6% ELASTANE

BLACK, HEATHER GREY, NAVY, WHITE



BLACK



HEATHER GREY



NAVY



WHITE

TR CARGO SLIM W

PANTALON ARMY FITTÉ, 97% COTON, 3% ÉLASTHANNE

SLIM FIT ARMY PANTS, 97% COTTON, 3% ELESTANE

BLACK, CAMO, OFF WHITE, KHAKI, NAVY

CAMO

NAVY



BLACK

KHAKI

OFF WHITE



HAT BOSTON BLACK – P91

GL 100

GANTS ERGONOMIQUE, 79% NYLON, 20% POLYURÉTHANE, 1% ÉLASTHANNE
 ERGONOMICS GLOVES, 79% NYLON, 20% POLYURETHANE, 1% ELASTANE
 BLACK



BLACK

GL 408

GANTS POUR ÉCRANS TACTILES, 100% ACRYLIQUE
 FINGER TIP TOUCH SCREEN GLOVES, 100% ACRYLIC
 BLACK



BLACK

GL 474

GANTS PRESSIONNÉS, BUFFALO LEATHER
 SNAPPED GLOVES, BUFFLE
 BLACK, BROWN



BLACK

GL 482

GANTS SUÉDINE, DOUBLÉS POLAIRE, 75% VELOURS DE PORC, 25% ACRYLIQUE
 SUEDE GLOVES, POLAR FLEECE LINING, 75% PIG SUEDE, 25% ACRYLIC
 BLACK, BROWN



BLACK

GL 1680

GANTS PRESSIONNÉS, CHÈVRE
 SNAPPED GLOVES, GOAT LEATHER
 BLACK, BROWN



BROWN

GL GEAR 1

VACHETTE
 COWHIDE
 BLACK, BROWN



BROWN

GL GEAR 2

VELOURS DE CHÈVRE
 GOAT SUEDE
 BLACK, RUST



RUST

GL SHEEP 1

MOUTON DOUBLE FACE
 SHEEPSKIN DOUBLE FACE
 BLACK, BROWN



BROWN

SCARF DOCKER

ECHARPE AVEC BADGE SCHOTT NYC, 100% ACRYLIQUE
 SCARF WITH SCHOTT NYC BADGE, 100% ACRYLIC
 BLACK, HEATHER ANTHRACITE, HEATHER GREY, NAVY STRIPES, NAVY



HEATHER ANTHRACITE

HAT DOCKER

BONNET BEANIE, 100% ACRYLIQUE
 BEANIE HAT, 100% ACRYLIC
 BLACK, HEATHER ANTHRACITE, HEATHER GREY, NAVY, NAVY STRIPES



HEATHER GREY

NAVY STRIPES

SNOOD OUTSTAR

ÉCHARPE, 66% ACRYLIQUE, 12% POLYAMIDE,
 11% LAINE, 6% SOIE, 5% AUTRES FIBRES
 SCARF, 66% ACRYLIC, 12% POLYAMIDE,
 11% WOOL, 6% SILK, 5% OTHER FIBERS
 NAVY



NAVY

SCARF BARKLEY

ÉCHARPE MAILLE TRESSÉE, 50% COTON, 50% ACRYLIQUE
 BRAIDED KNIT SCARF, 50% COTTON, 50% ACRYLIC
 BLACK



BLACK

SCARF YANKER

ÉCHARPE TORSADÉE, 50% COTON, 50% ACRYLIQUE
 CABLE SCARF, 50% COTTON, 50% ACRYLIC
 NAVY



NAVY

HAT OUTSTAR

BONNET BEANIE, 66% ACRYLIQUE, 12% POLYAMIDE, 11% LAINE,
 6% SOIE, 5% AUTRES FIBRES
 BEANIE HAT, 66% ACRYLIC, 12% POLYAMIDE, 11% WOOL,
 6% SILK, 5% OTHER FIBERS
 NAVY



NAVY

HAT BARKLEY

BONNET MAILLE TRESSÉE, 50% COTON, 50% ACRYLIQUE
 BRAIDED KNIT HAT, 50% COTTON, 50% ACRYLIC
 BLACK



BLACK

HAT YANKER

BONNET BEANIE TORSADÉ, 50% COTON, 50% ACRYLIQUE
 CABLE BEANIE HAT, 50% COTTON, 50% ACRYLIC
 NAVY



NAVY

HAT BAYLOR

BONNET MAILLE TORSADÉE, 75% ACRYLIQUE, 15% POLYAMIDE, 10% LAINE
 CABLE KNIT HAT, 75% ACRYLIC, 15% POLYAMIDE, 10% WOOL
 ANTHRACITE, BLACK, GOLD, RED



ANTHRACITE

BLACK

GOLD

RED

SCARF BAYLOR

ÉCHARPE MAILLE TORSADÉE, 75% ACRYLIQUE, 15% POLYAMIDE, 10% LAINE
 CABLE KNIT SCARF, 75% ACRYLIC, 15% POLYAMIDE, 10% WOOL
 ANTHRACITE, BLACK, GOLD, RED



ANTHRACITE

SCARF BOSTON

ECHARPE À CÔTES AVEC BRODERIE SCHOTT, 100% ACRYLIQUE
 RIBBED SCARF WITH SCHOTT EMBROIDERY, 100% ACRYLIC
 BEIGE MIX, BLACK, CHARCOAL MIX, NAVY



CHARCOAL MIX

SNOOD BOSTON

TOUR DE COU AVEC BRODERIE SCHOTT, 100% ACRYLIQUE
 RIBBED SNOOD WITH SCHOTT EMBROIDERY, 100% ACRYLIC
 BEIGE MIX



BEIGE MIX

HAT BOSTON

BONNET À CÔTES ET POMPON AVEC BRODERIE SCHOTT, 100% ACRYLIQUE
 RIBBED HAT WITH POMPOM AND SCHOTT EMBROIDERY, 100% ACRYLIC
 BEIGE MIX, BLACK, CHARCOAL MIX, NAVY



BEIGE MIX

BLACK

CHARCOAL MIX

NAVY

HAT OUTRIDER

BONNET ARMY, 75% ACRYLIQUE, 13% LAINE, 12% POLYAMIDE
 ARMY BEANIE HAT, 75% ACRYLIC, 13% WOOL, 12% POLYAMIDE
 BORDEAUX, NATURAL, NAVY, NAVY + NATURAL



BORDEAUX

HAT 67

BONNET À CÔTES, 100% COTON
 RIBBED HAT, 100% COTTON
 ANTHRACITE, BLACK, HEATHER GREY



HEATHER GREY

SCARF HOLDER

ÉCHARPE, 38% LAINE, 28% POLYAMIDE, 22% COTON, 7% ACRYLIQUE, 5% AUTRES FIBRES
 SCARF, 38% WOOL, 28% POLYAMIDE, 22% COTTON, 7% ACRYLIC, 5% OTHER FIBERS
 ANTHRACITE, BEIGE, BLACK



BEIGE

HAT HOLDER

BONNET BEANIE, 38% LAINE, 28% POLYAMIDE, 22% COTON, 7% ACRYLIQUE, 5% AUTRES FIBRES
 BEANIE HAT, 38% WOOL, 28% POLYAMIDE, 22% COTTON, 7% ACRYLIC, 5% OTHER FIBERS
 ANTHRACITE, BEIGE, BLACK



BLACK

CAP 1917

CHAPKA MATELASSÉE, DOUBLURE FAUSSE FOURRURE, 100% NYLON
 BEAVER HAT, FAUX FUR LINING, 100% NYLON
 BLACK, KHAKI, WHITE



BLACK



KHAKI



WHITE

CAP CIRCLE

100% COTON
100% COTON
BLACK, NAVY



NAVY

BLACK

CAP JIM

50% LAINE, 50% POLYESTER
50% WOOL, 50% POLYESTER
BLACK



BLACK

CAP JIMMY

100% COTON
100% COTON
BLACK + CAMEL, NAVY + RED



BLACK + CAMEL

NAVY + RED

CAP RUSSEL

85% POLYESTER, 15% LAINE
85% POLYESTER, 15% WOOL
BLACK, GREY



GREY

BLACK

CAP WOOL

50% LAINE, 50% POLYESTER
50% WOOL, 50% POLYESTER
BLACK, NAVY



BLACK

NAVY

7306
VACHETTE
COWHIDE
BLACK, BROWN

BLACK



BROWN

7308
VACHETTE
COWHIDE
BLACK, BROWN

BLACK



BROWN

BELT 1202
VACHETTE
COWHIDE
BLACK, TOBACCO, DARK BROWN



TOBACCO

BLACK

DARK BROWN

BELT 16935
VACHETTE VÉGÉTALE
VEGETAL COWHIDE
BLACK, BROWN

BLACK



BROWN

BELT 16936
VACHETTE VÉGÉTALE
VEGETAL COWHIDE
BLACK, CAMO, KHAKI

KHAKI



CAMO

BELT 16937
POLYESTER
POLYESTER
BEIGE, BLACK, KHAKI, NAVY

KHAKI



NAVY

BELT 16938

VACHETTE GRAINÉE
GRAINED COWHIDE
BLACK, BROWN



BLACK

BROWN

BELT 16939

VACHETTE VÉGÉTALE
VEGETAL COWHIDE
BLACK, BROWN



BLACK

BROWN

BELT 16941

VACHETTE
COWHIDE
BLACK + BROWN



BLACK + BROWN

BELT 16943

VACHETTE
COWHIDE
BLACK + BROWN



BLACK + BROWN

BELT 16942

VACHETTE
COWHIDE
BLACK, BROWN



BLACK

BROWN

BELT OCTO

VACHETTE VÉGÉTALE
VEGETAL COWHIDE
BLACK, DARK BROWN



BLACK

DARK BROWN

BELT WALLACE

VACHETTE
COWHIDE
BLACK, DARK BROWN



BLACK

DARK BROWN



SCL 001

PORTE-DOCUMENTS, NYLON ET REFENTE DE CUIR
BRIEFCASE, NYLON AND SPLIT-LEATHER
39 CM X 29 CM X 8,5 CM
BLACK, KHAKI



BACK



INSIDE



BLACK

SCL 002

PETIT PORTÉ-CROISÉ, NYLON ET REFENTE DE CUIR
SMALL CROSSOVER, NYLON AND SPLIT-LEATHER
17,5 CM X 23,5 CM X 2 CM
BLACK, KHAKI



INSIDE



KHAKI

SCL 003

GRAND PORTÉ-CROISÉ, NYLON ET REFENTE DE CUIR
LARGE CROSSOVER, NYLON AND SPLIT-LEATHER
23 CM X 29 CM X 3 CM
BLACK, KHAKI



INSIDE



KHAKI

SCL 004

SAC À DOS, NYLON ET REFENTE DE CUIR
BACKPACK, NYLON AND SPLIT-LEATHER
33 CM X 46 CM X 14 CM
BLACK, KHAKI



BACK



KHAKI

SCL 005

HELMET BAG, NYLON ET REFENTE DE CUIR
HELMET BAG, NYLON AND SPLIT-LEATHER
42 CM X 40 CM X 4 CM
BLACK, KHAKI



INSIDE



KHAKI

SCL 006

SAC DE VOYAGE, NYLON ET REFENTE DE CUIR
TRAVEL BAG, NYLON AND SPLIT-LEATHER
54 CM X 30 CM X 22 CM
BLACK, KHAKI



INSIDE



KHAKI



TS LOGO HEATHER GREY + CAMO – P.59
SCL 054 NAVY – P.98

SCL 054

SAC À DOS BRODÉ, TOILE DE COTON ET REFENTE DE CUIR
EMBROIDERED BACKPACK, COTTON CANVAS AND SPLIT-LEATHER
29 CM X 42 CM X 16 CM
NAVY



LOGO

NAVY

SCL 052

BESACE, TOILE DE COTON ET REFENTE DE CUIR
MESSENGER, COTTON CANVAS AND SPLIT-LEATHER
36 CM X 27 CM X 11,5 CM
NAVY



INSIDE

NAVY

SCL 051

PETIT PORTÉ-CROISÉ, TOILE DE COTON ET REFENTE DE CUIR
SMALL CROSSOVER, COTTON CANVAS AND SPLIT-LEATHER
18,5 CM X 24 CM X 2 CM
NAVY



INSIDE

NAVY

SCL 050

PORTE-DOCUMENTS, TOILE DE COTON ET REFENTE DE CUIR
 BRIEFCASE, COTTON CANVAS AND SPLIT-LEATHER
 39 CM X 29 CM X 8,5 CM
 NAVY



NAVY

SCL 055

SAC BOWLING, TOILE DE COTON ET REFENTE DE CUIR
 BOWLING BAG, COTTON CANVAS AND SPLIT-LEATHER
 39 CM X 35 CM X 17 CM
 NAVY



NAVY

SCL 056

SAC DE VOYAGE, TOILE DE COTON ET REFENTE DE CUIR
 TRAVEL BAG, COTTON CANVAS AND SPLIT-LEATHER
 53 CM X 33 CM X 22 CM
 NAVY



NAVY

SCL 057

SAC DE VOYAGE SÉRIGRAPHIÉ, TOILE DE COTON ET REFENTE DE CUIR
 SCREEN-PRINTED TRAVEL BAG, COTTON CANVAS AND SPLIT-LEATHER
 53 CM X 33 CM X 22 CM
 NAVY



NAVY

SCL 100

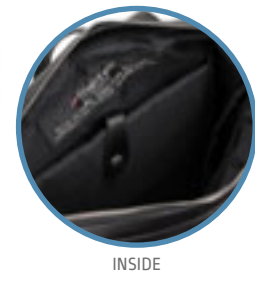
SAC À DOS, SÉRIE PERFECTO, REFENTE DE CUIR
 BACKPACK, PERFECTO SERIES, SPLIT-LEATHER
 30 CM X 44 CM X 17 CM
 BLACK



BACK



BLACK

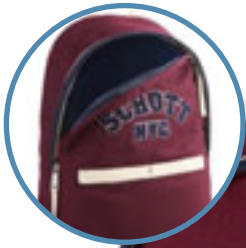


INSIDE

100 SACS / BAGS

SAC COLLEGE

SAC À DOS, 100% LAINE, 41 X 31 X 16CM
BACKPACK, 100% WOOL, 41 X 31 X 16CM
BORDEAUX, GREY, NAVY



BORDEAUX

GREY

NAVY



SAC ARMY

SAC À DOS, SÉRIE BOMBER, 100% NYLON, 41 X 31 X 16CM
BACKPACK, BOMBER JACKET SERIES, 100% NYLON, 41 X 31 X 16CM
BLACK, BORDEAUX, KHAKI, NAVY, POWDER



BLACK

BORDEAUX

KHAKI

NAVY

POWDER



